

# KAMBROOK



**Kambrook** 4 Kingston Town Close Oakleigh, Victoria 3166, Australia  
Customer Service Line (free call) 1800 800 634 Customer Service Fax 1800 621 337  
**Kambrook** New Zealand, Private Bag 94411, Greenmount, Auckland, New Zealand  
Customer Service Line/Spare Parts 09 271 3980 Customer Service Fax 0800 288 513

Due to continual improvement in design or otherwise, the product you purchase may differ slightly from the one illustrated in this book. Issue 1/03

# KAMBROOK



## Jaguar Power Twister Vacuum Cleaner



KBV30

Issue 1/03

## Welcome to Kambrook and your new Jaguar Power Twister Vacuum Cleaner.

At Kambrook we believe that the safe performance of our products is the first priority in any consumer product so that you, our valued customer, can confidently use and trust our products.

We ask that any electrical appliance that you use be operated in a sensible fashion with due care and attention placed on the following important operating instructions:

**Read all instructions thoroughly before activating the appliance and retain them for future reference.**

Ensure that the power source to be used is the same as the voltage requirement of the product.

**DO NOT IMMERSE** the vacuum cleaner, cord or power plug in water or any other liquid

Always switch the vacuum off, then switch off at the power outlet and unplug the vacuum when not in use and prior to cleaning or replacing dust bags or filters.

Never use the vacuum to vacuum hot ashes, broken glass, sharp objects or liquids

Never use in the presence of explosive liquids or vapours

Never vacuum up inflammable or poisonous liquids such as petrol, copier toner or other volatile substances. Never vacuum up acids, asbestos or asbestos dust.

This vacuum is not intended for use by young children or infirm persons, without supervision.

Do not leave the vacuum cleaner unattended when in use. Young children should be supervised to ensure that they do not play with the appliance.

Close supervision is required at all times when operating the vacuum near children.

Do not store or leave the vacuum near hot ovens or heating appliances.

This vacuum cleaner is suitable for domestic use only. Do not use this vacuum cleaner for anything other than its intended use.

Do not use or store outdoors.

Fully extend the cord (to the yellow or red tape mark) whenever the vacuum cleaner is in use.

The installation of a residual current device (safety switch) is recommended to provide additional safety protection when using electrical appliances. It is advisable that a safety switch with a rated residual operating current not exceeding 30mA be installed in the electrical circuit supplying the appliance. See your electrician for professional advice.

Regularly inspect the supply cord, plug and actual appliance for any damage. If found damaged in any way, immediately cease use of the appliance and return the entire appliance to the nearest authorised Kambrook service centre for examination, replacement or repair.

## Features of your Kambrook Jaguar Power Twister Vacuum Cleaner



1. Hose inlet connection point
2. Dust canister (Hepa filter)
3. Cord rewind foot pedal
4. On/off foot pedal
5. Crush proof hose
6. Fingertip suction control
7. Telescopic wand
8. Turbo brush floor head

9. Hard Floor Brush
10. Crevice tool
11. Upholstery tool
12. Tool storage (on wand)
13. Cord storage outlet

## Using Your Kambrook Jaguar 'Power Twister' Bagless Vacuum Cleaner

Remove all packaging from the unit, hose and other accessories; ensure that you have removed all of the accessories before discarding the packaging.

Ensure that the dust canister and filters are correctly fitted.

Locate the crush proof hose and push the connection point into the hose inlet connection on the top of the unit, until a "click" sound is heard.

To extend the telescopic wand, push the extension lever in the direction of the arrow (printed on the lever) and pull out the narrower tube to the desired height.

Connect the wide end of the telescopic tube on to the hose end, and push together firmly.

Fit the floor head to the narrow end of the wand and push together firmly

Fully extend the power cord by pulling the power plug (situated at the rear of the unit) out from the unit, until the yellow tape on the cord is shown.

### **ENSURE THAT YOU DO NOT OVER EXTEND THE POWER CORD – DO NOT EXTEND PAST THE RED WARNING TAPE ON THE CORD**

Plug into a 230/240v power point and switch the power on.

To commence vacuuming push down on the on/off foot pedal, at the top, rear of the unit. ①

For full suction power ensure that the fingertip suction control cover (on the top of the hose) is closed. The suction power can be reduced by opening the suction control cover.

When vacuuming is complete, turn the vacuum cleaner 'OFF' by pushing down on the 'ON/OFF' foot pedal. Turn the power off at the outlet and then remove the power cord from the power outlet (when removing plug from the power outlet grasp the plug not the cord).

To retract the cord push down on the 'cord rewind' foot pedal. ②

### **IMPORTANT: HOLD THE PLUG END WHEN RETRACTING THE CORD TO PREVENT IT FROM STRIKING YOU OR THE VACUUM.**

**⚠ ALWAYS ENSURE THAT THE DUST CANISTER IS CORRECTLY FITTED. NEVER OPERATE WITHOUT THE DUST CANISTER IN PLACE.**

#### **Crevice and brush tool accessories**

The crevice tool is ideal for vacuuming hard to reach places such as the edges along skirting boards, crevices, corners and in between cushions.

The upholstery tool can be used to vacuum delicate surfaces and areas such as shelves, venetian blinds, furniture and lamp shades.

When using the crevice and upholstery tools, slide the Fingertip Suction Control cover (located on the wand handle) to the open position to reduce suction.

Both the Crevice and Upholstery tools

can be stored on the telescopic wand tool storage stand for easy access and storage.

Turn the vacuum cleaner OFF when changing any attachments.

#### **Park Tool Feature**

The park tool feature can be used to park the wand in the upright (storage) position

The park tool attachment hook, for upright storage is located on the lower wand.

With the vacuum switched off and unplugged from the power point, insert the park tool hook into the park tool receptacle on the vacuum body

*Note: The floor tool should be attached and in contact with the floor to give stability, if correctly assembled.*

#### **Emptying the Dust Canister**

The dust canister should be emptied when the dust inside the canister reaches the max marking (indicated on the side of the canister).

Always switch the appliance off, then switch off at the power outlet and unplug the appliance prior to emptying the dust canister or changing filters.

To remove the dust canister, press the 'dust canister compartment release button' located on the side of the unit. The canister will then slide out.



*NOTE: The canister compartment lid may not close if the canister is not correctly fitted.*

## **IMPORTANT: DO NOT USE THE UNIT WITHOUT THE DUST CANISTER IN PLACE**

### **Replacing / Cleaning filters**

#### **HEPA and Micro Dust Filter**

There are 2 dust filters located inside the dust canister. The outer filter is the Micro Dust filter and the inner filter is the HEPA filter.

To remove these filters for cleaning, follow the instructions listed under 'Emptying the dust canister' on page 5.

Once the dust canister lid has been removed, hold the top of the lid with one hand and grasp the bottom of the filter with the other hand to separate the filters from the dust canister lid. You may need to rotate the bottom of the filter slightly clockwise to release.



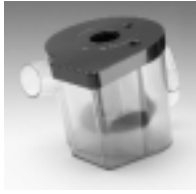
The HEPA filter and Micro dust filter can be washed in lukewarm water. Allow to dry completely before placing the filters back into the dust canister.

To reposition the HEPA filter and Micro-filter follow these steps:

1. Hold the base of the HEPA filter
2. Slide the Micro-dust filter over the HEPA filter
3. Still holding the base of the filter in one hand, take the dust canister lid in the other hand and push the filter onto the lid so that the round opening in the filter fits over the round opening in the dust canister lid.

### **Air exhaust filter**

The air exhaust filter is located at the front, right hand side of the unit. Rotate the plastic filter holder anti-clockwise to remove.



### **Care and Maintenance**

Always switch appliance off, then switch off at the power outlet and unplug the vacuum cleaner prior cleaning or replacing either filter.

To clean the outside of the unit, wipe the exterior with a soft, damp cloth. Never use an abrasive cleaner.

To clean the dust canister, remove the dust canister lid and rinse the canister with lukewarm water. Ensure the canister is completely dry before replacing the dust canister lid for use.

From time to time hair, cotton and other items may get caught in the brushes of the Turbo Head and prevent it from spinning around. To remove such items, take a pair of scissors and cut the across the cotton, hair etc. to loosen, then gently pull to remove.

*NOTE: Do not continue to pull if the item/s does not easily come out as this may permanently damage the Floor Head.*





**KAMBROOK**

**12 MONTH**

**REPLACEMENT WARRANTY**

KAMBROOK warrants the purchaser against defects in workmanship and material, for a period of 12 months from the date of purchase (3 months commercial use).

Guarantee and purchase receipt for this product are to be retained as proof of purchase and must be presented if making a claim under the terms of the KAMBROOK guarantee.

KAMBROOK reserves the right to replace or repair the appliance within the warranty period.

Warranty does not apply to any defect, deterioration, loss or injury or damage occasioned by, or as a result of the misuse or abuse, negligent handling or if the product has not been used in accordance with the instructions. The guarantee excludes breakages and consumable items such as kneading blades.

This warranty is void if there is evidence of the product being tampered with by unauthorised persons.

If the product includes one or a number of accessories only the defective accessory or product will be replaced.

In the event of KAMBROOK choosing to replace the appliance, the guarantee will expire at the original date, ie. 12 months from the original purchase date.

In Australia, this KAMBROOK Guarantee is additional to the conditions and guarantees which are mandatory as implied by the Trade Practices Act 1974 and State Territory legislation.

**For service, spare parts or product information in Australia,** please call KAMBROOK on the customer Service Line (free call) 1800 800 634.

**For service, spare parts or product information in New Zealand,** please call KAMBROOK New Zealand, Greenmount, Auckland Phone 09 271 3980 Fax 0800 288 513. For spare parts phone 09 271 3980.

If claiming under this guarantee the product must be returned to freight prepaid.

YOUR PURCHASE RECORD (Please complete)

Attach purchase receipt here.

DATE OF PURCHASE \_\_\_\_\_

MODEL NUMBER \_\_\_\_\_

SERIAL NUMBER (If applicable) \_\_\_\_\_

PURCHASED FROM \_\_\_\_\_

Please don't return purchase record unless you are making a claim